

kirkbydesign



# INTERACTIVE CONTENTS



**P4**  
**SUSTAINABLE**  
**DESIGN**



**P6**  
**MILAN DESIGN**  
**WEEK 2023**



**P8**  
**FORMATION**



**P22**  
**SURFACE**



**P30**  
**STILL FR**



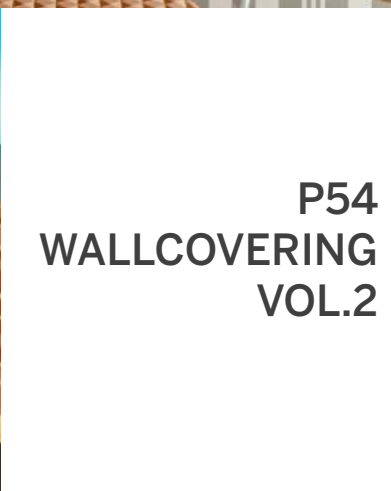
**P36**  
**SEGMENT**  
**RECYCLED**



**P46**  
**TIDE OUTDOOR**  
**RECYCLED**



**P54**  
**WALLCOVERING**  
**VOL.2**





# SUSTAINABLE DESIGN

With an awareness of the issues faced by our industry, we are consciously changing the way in which our products are engineered and manufactured and how they can be recycled. Alongside creating designs of outstanding quality, **sustainability** is at the forefront of every decision made during the development process. Each collection we introduce more sustainable fabrics and wallcoverings to our library, allowing for more **consciously** developed products with a reduced impact on our planet.

# Noise

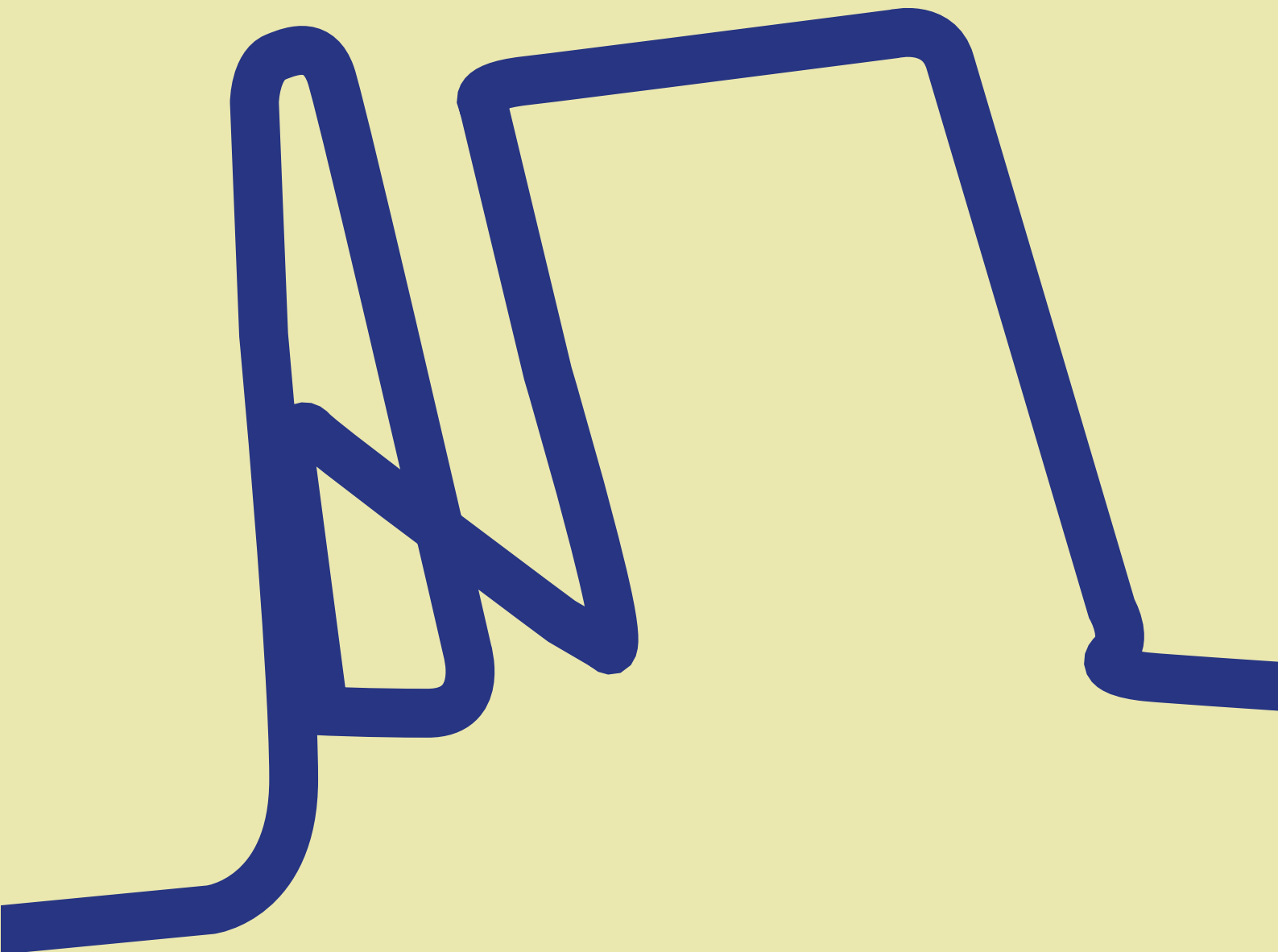
BY

kirkbydesign

×

GREEM

*greem*



# MILAN DESIGN WEEK 2023

As part of Milan Design Week, we unveiled NOISE, an experiential installation in collaboration with Korean artist Greem Jeong. Located in the heart of the Brera district, NOISE drew attention to consumption and waste expressed through graphic and sculptural form.

Reinterpreting the new SCRIBBLE design, Greem fashioned a life-sized sculpture created from 98% waste plastic from the 3D printing process and 2% natural binding agents. The installation was an invitation to journey through the space and interact with this unique sculpture that encourages a moment of pause and re-evaluation.

SCRIBBLE wallcovering provided a contemporary backdrop to the installation. Printed on a sustainably sourced, FSC certified, wood pulp and corn fibre base, producing 30% less greenhouse gas than traditional wallpaper manufacturing, SCRIBBLE was the original inspiration behind the sculpture.



FORM



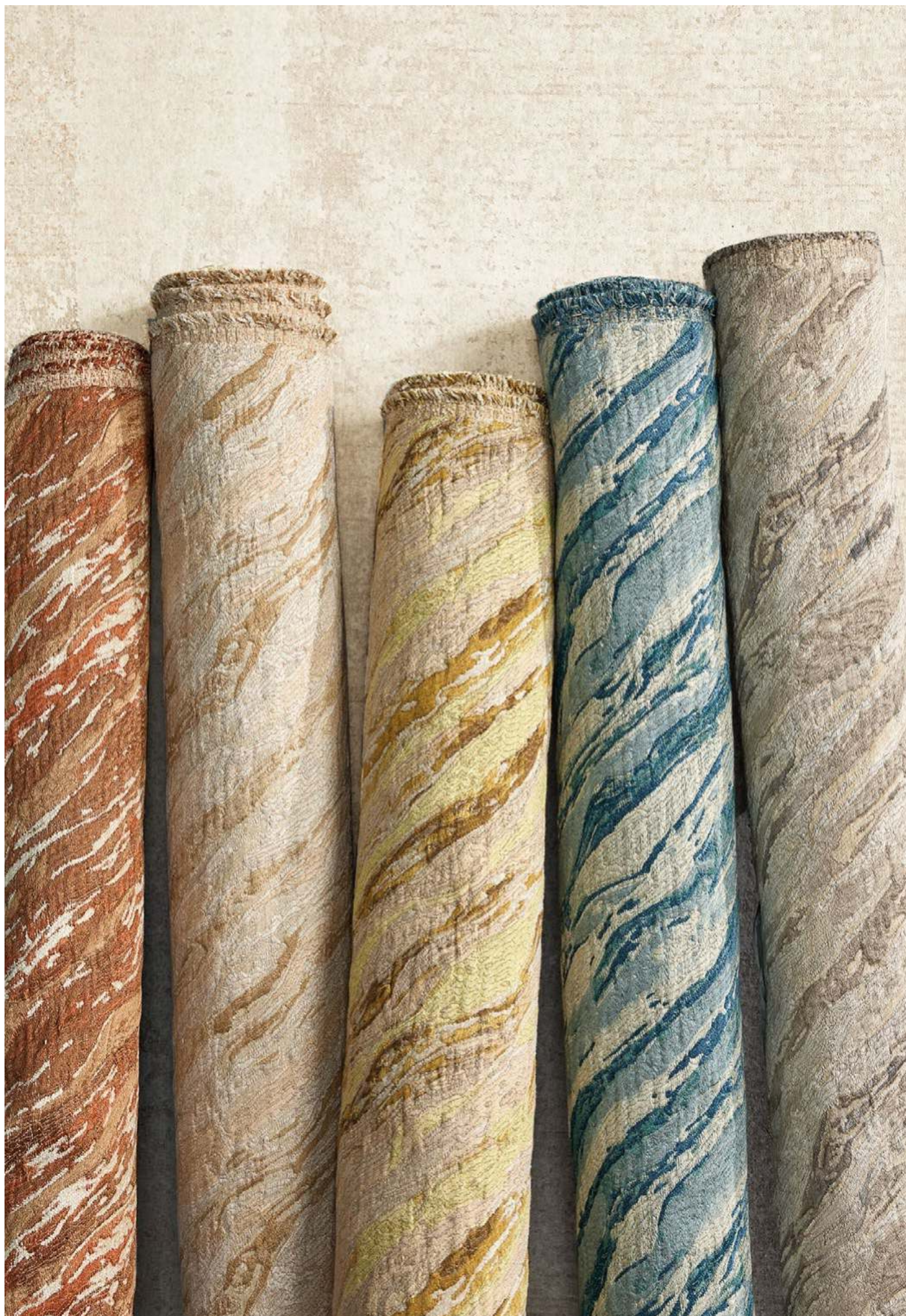
# ATION



# FORMATION

## Decorative Prints, Weaves and Embroidery

A hero collection of original designs woven with a mixture of **innovative materials** and **techniques**, including a layered pocket weave, chunky knit, relaxed embroidery, detailed jacquard and patterned velvets.







A cutting-edge palette brings each design to life, as earthy browns and rich ochres are punctuated by zesty tones of green, orange and apricot.















# SURFA



ACE



# SURFACE

## Textured Weaves & Recycled Knit

Chunky, tactile, usable and hardwearing, two **characterful bouclés** and a **recycled** knitted wool fleece take texture to a new level of irresistibility.



Highly textured cloths that are satisfyingly soft to touch and perfect for enhancing upholstery furniture.











STILL



FR



# STILL FR

## Wool Velvet

Spun from fibres of the highest quality, STILL FR has an **incredibly dense pile** and **matte appearance** that reflects its sophisticated character. A stain repellent finish, high rub count and inherent crib 5 status ensures it's practicality.





Naturally warming, this wool velvet instils a sense of cosy comfort and calmness.



# SEGMENT



# ENT





# SEGMENT

## Recycled Prints

Hand-painted graphics in a multitude of colours are digitally printed onto **100% GRS recycled cotton** from the fashion industry. Originally painted using watercolours, the prints have a soft, organic edge, coloured in an **expressive palette** of playful yet on-trend colour combinations.















# TIDE OUT



# OUTDOOR





# TIDE OUTDOOR

## Recycled Outdoor Weaves

Made from **100% recycled** solution dyed polyester using GRS certified yarns produced from waste plastic bottles, TIDE defies its recycled plastic origins, with each of the three designs having an unexpected softness and an anti-mould and stain repellent finish. Approximately **20 x 1.5L bottles** are used to produce 1m of fabric.



Three qualities that deliver on style,  
texture, colour and practicality.











WALL COVER



# RINGS VOL.2



# WALLCOVERINGS VOL.2

A collection of contemporary designs printed on a blended ground of plant based FSC (The Forest Stewardship Council) certified wood pulp and corn fibre.

Corn fibre is a sustainable and **environmentally friendly** choice, as corn is a renewable resource that can be grown and harvested with limited impact on the environment. Additionally, the manufacturing process **produces 30% less greenhouse gas** than traditional wallpaper materials.

















CUSH

# IONS



# CUSHIONS

Decorative cushions in a variety of textures, colours and sizes, designed to complement statement designs from across the collection.



**Scribble Monochrome** KDC5318/04

35cm Ø (13.75")  
Cover: Decorative Recycled Flock Velvet



**Scribble Noir** KDC5318/05

35cm Ø (13.75")  
Cover: Decorative Recycled Flock Velvet



**Scribble Amber** KDC5318/06

35cm Ø (13.75")  
Cover: Decorative Recycled Flock Velvet



**Cubic Copper** KDC5304/01

60cm x 60cm (23.5" x 23.5")  
Cover: Decorative Velvet



**Cubic Monochrome** KDC5304/03

60cm x 60cm (23.5" x 23.5")  
Cover: Decorative Velvet



**Lava Natural** KDC5298/03

30cm x 60cm (11.75" x 23.5")  
Cover: Pocket Weave



**Lava Terracotta** KDC5298/04

30cm x 60cm (11.75" x 23.5")  
Cover: Pocket Weave



**Monogram Sandstone** KDC5303/02

30cm x 60cm (11.75" x 23.5")  
Cover: Decorative Velvet



**Monogram Monochrome** KDC5303/01

30cm x 60cm (11.75" x 23.5")  
Cover: Decorative Velvet



**Explode Night Garden** KDC5305/01

60cm x 60cm (23.5" x 23.5")  
Front: Decorative Velvet  
Reverse: Stonewashed Linen



**Explode Earthen** KDC5305/02

60cm x 60cm (23.5" x 23.5")  
Front: Decorative Velvet  
Reverse: Stonewashed Linen



**Explode Monochrome** KDC5305/04

60cm x 60cm (23.5" x 23.5")  
Front: Decorative Velvet  
Reverse: Stonewashed Linen



**Checkerboard Knit Monochrome** KDC5299/04

60cm x 60cm (23.5" x 23.5")  
Cover: Knitted Weave



**Foam Stone** KDC5312/03

60cm x 60cm (23.5" x 23.5")  
Front: Bouclé Weave  
Reverse: Stonewashed Linen



**Foam Monochrome** KDC5312/11

60cm x 60cm (23.5" x 23.5")  
Front: Bouclé Weave  
Reverse: Linen Blend



**Stars Natural** KDC5309/03

60cm x 60cm (23.5" x 23.5")  
Cover: Printed 100% Recycled Cotton



**Stars Macchiato** KDC5309/05

60cm x 60cm (23.5" x 23.5")  
Cover: Printed 100% Recycled Cotton



**Checkerboard Natural** KDC5306/01

30cm x 60cm (11.75" x 23.5")  
Cover: Printed 100% Recycled Cotton



**Checkerboard Terracotta** KDC5306/04

30cm x 60cm (11.75" x 23.5")  
Cover: Printed 100% Recycled Cotton



**Checkerboard Pistachio** KDC5306/05

30cm x 60cm (11.75" x 23.5")  
Cover: Printed 100% Recycled Cotton



**Checkerboard Monochrome** KDC5306/06

30cm x 60cm (11.75" x 23.5")  
Cover: Printed 100% Recycled Cotton



**Pool  
Monochrome**

**KDC5316/01**

60cm x 60cm (23.5" x 23.5")  
Front: Recycled Outdoor  
Bouclé Weave  
Reverse: Recycled Outdoor  
Bouclé Weave



**Pool  
Grapefruit**

**KDC5316/02**

60cm x 60cm (23.5" x 23.5")  
Front: Recycled Outdoor  
Bouclé Weave  
Reverse: Recycled Outdoor  
Bouclé Weave



**Tide  
Watermelon**

**KDC5317/02**

60cm x 60cm (23.5" x 23.5")  
Front: Recycled Outdoor  
Bouclé Weave  
Reverse: Recycled Outdoor  
Bouclé Weave



**Tide  
Natural**

**KDC5317/06**

60cm x 60cm (23.5" x 23.5")  
Front: Recycled Outdoor  
Bouclé Weave  
Reverse: Recycled Outdoor  
Bouclé Weave







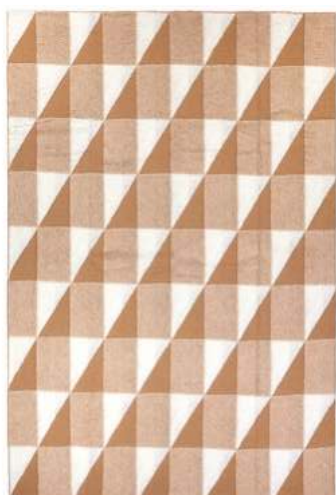
# THROWS

Two recycled wool throws and a woven, sustainable monogram throw offer an eclectic mix of design and texture created to add layered comfort.



**Segment Monochrome** THK5321/01

150cm x 225cm (59" x 88.5")



**Segment Havana** THK5321/02

150cm x 225cm (59" x 88.5")



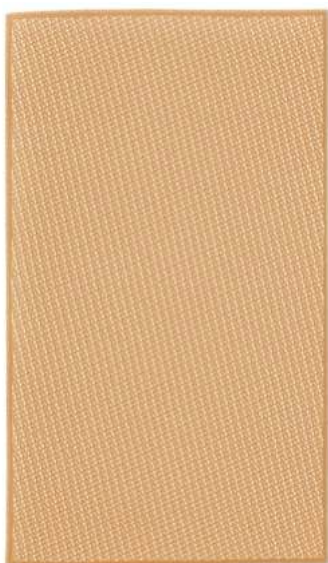
**Pool Havana** THK5320/02

140cm x 230cm (55.25" x 90.5")



**Pool Marine** THK5320/01

140cm x 230cm (55.25" x 90.5")



**Monogram Bohemia** THK5319/02

140cm x 230cm (55.25" x 90.5")



**Monogram Monochrome** THK5319/01

140cm x 230cm (55.25" x 90.5")



This is a detailed image of the Monogram Throw THK5319/01 in monochrome.

# CONTACTS

## UK Sales

+44 (0) 1623 727017  
sales@romo.com

## International Sales

+44 (0) 1623 727016  
export@romo.com

## USA Sales

+1 (800) 338-2783  
info@romousa.com

## Canadian Sales

+1 (855) 543-7666  
info@romousa.com

Romo Group products are available worldwide. For a full list of our international showrooms and distributors or to find your nearest supplier, please visit our website: [kirkbydesign.com](http://kirkbydesign.com)

# SHOWROOMS

## EUROPE SHOWROOMS

### London

Romo Showroom  
Design Centre Chelsea Harbour  
Lots Road, London SW10 0XE  
08456 444400  
london.showroom@romo.com

### Paris

Romo Showroom  
3-5 Rue Du Mail,  
75002 Paris  
+33 1 42 61 63 20  
showroom@angely-paris.com

### Munich

Romo Showroom  
Ottostr. 5,  
80333 Muenchen  
+49 89 89 666 160  
romo@romo.de

### The Netherlands

Romo Showroom  
Vleugelboot 80,  
3991 CL Houten  
+31 30 605 3218  
salesnl@romo.com

### Stockholm

Romo Showroom  
Grev Turegatan 45,  
114 38 Stockholm  
+46 8 6605822  
sweden@romo.com

## USA SHOWROOMS

### Atlanta

Romo 470-705-7666

### Boston

Romo (617) 737-0599

### Chicago

Romo (312) 670-7666

### Cleveland

Romo (440) 543-0360

### Dallas

Romo (469) 830-7666

### Dania

Romo (954) 922-3970

### Denver

Town (303) 282-8696

### Kansas City

KDR Designer Showrooms  
(913) 859-0400

### Los Angeles

Romo (323) 940-7666

### Minneapolis

Francis King Ltd.  
(612) 604-0033

### New York

Romo (212) 319-7666

### San Francisco

De Sousa Hughes  
(415) 626-6883

### Scottsdale

Town (480) 214-4792

### Seattle

Trammell Gagne  
(206) 762-1511

### St Louis

KDR Designer Showrooms  
(314) 993-5020

### Troy

Tennant & Associates  
(248) 643-6140

### Washington DC

Romo (202) 525-4953

## CANADA SHOWROOMS

### Calgary

Designer's Choice  
Resource Center  
(403) 243-1415

### Montreal

Crescendo (514) 933-0067

### Toronto

Romo (647) 490-7666

### Vancouver

AnneStarr Agencies  
(604) 254-3336



## WITH THANKS

A.G.O, Alice Guillaume, Benni Allen, Christian Watson, Dare Studio, Fred Rigby, Hem Jott Studio, Lights and Lamps, LSA, MAH, Martin & Parker, Menu, Mylands, New Works , Oragi, OYOY, Plus Halle, Relay Design, S- Contract, String, The Conran shop, The Rug Company, Vincent Shepherd, Zeitraum

[kirkbydesign.com](http://kirkbydesign.com)

Follow us on social media for all our latest news and events.



@KirkbyDesign



kirkbydesign



Kirkby\_Design

kirkbydesign.com

THE ROMO GROUP